

Building for the Next Generation

MediaCorp Headquarters

Singapore

Architects: Maki and Associates with DP Architects
Client: MediaCorp

Description: New HQ for Singapore’s largest media group, in the Mediapolis digital innovation district. Carbon-efficient structural frame minimised the project’s embodied energy and emissions. Building incorporates efficient air conditioning system, light shafts to maximise natural light, and regenerative drives to recover waste energy from lifts. Achieved Green Mark Platinum certification. Completed 2015.



University of Technology Petronas R&D Centre

Perak, Malaysia

Architects: GDP Architects
Client: KLCC Projects

Description: Environmental design of a research and development campus focussing on energy & water efficient design. Achieved GBI Certificate. Completed 2016.



Alice Smith Secondary School Campus Extension

KL, Malaysia

Architects: GDP Architects
Client: Alice Smith School

Description: Campus extension with a focus on passive design and improved environmental quality to facilitate superior learning. Designed to GBI Silver certification. Construction 2018.



New SIT Campus Heart

Singapore

Architects: WOHA
Client: Singapore Institute of Technology Estates

Description: Two innovative and iconic new campus buildings housed within the Punggol Digital District (for which Web Earth are also ESD consultants). Designed to Green Mark Platinum. Design stage. Target completion 2023.



WEB EARTH ///// SINGAPORE 40 Carpenter Street, Singapore 059919 T (65) 6223 9208
WEB EARTH ///// MALAYSIA Plaza 138, #21-01/02/03/04, 140 Jalan Ampang, 50450 KL, Malaysia T (603) 2161 0907
WEB EARTH ///// ENGLAND 277 Willesden Lane, London NW2 5JA, England T (44) 0207 385 0668
WEB EARTH ///// CHINA 18th Floor Lujiazui Finance Center, 826 Century Avenue Pudong Shanghai 200120, China T (8621) 5116 7108





Building for the Next Generation

New Supreme Court Complex Fort Bonifacio, Philippines

Architects: Eric Parry Architects
Client: Supreme Court of the Philippines

Description: The building targets near zero operational energy, generated through a combination of solar and wind energy. The building mass reduces exposure on the facades by over 25% through an inclined position allowing for more glazed area, increasing natural daylight and external views. Competition 2016.



Meditation Centre Singapore

Architects: Forum Architects
Client: Kong Meng San Phor Kark See Monastery

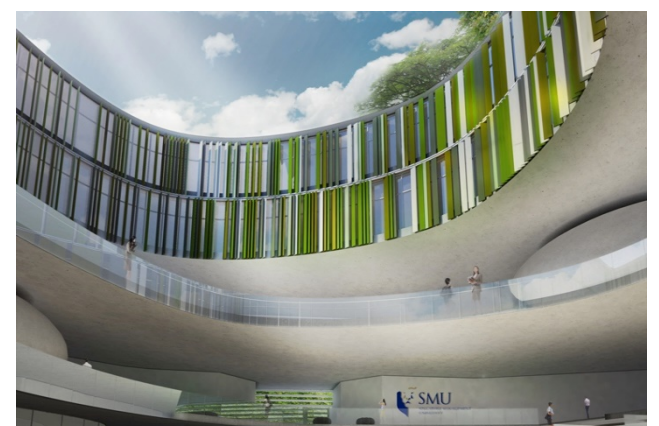
Description: This meditation centre focuses on passive design strategies, including a naturally ventilated meditation hall. It is located on top of a hill and benefits from unobstructed prevailing wind from the North and South. Construction stage. Target completion 2019.



SMU-X Singapore

Architects: MKPL Architects
Client: Singapore Management University

Description: A new facility developed together with the innovative pedagogies championed by the Singapore Management University, meant to push the boundaries and be at the forefront of educational design. Acting as a strong campus connector, the building also reinforces and enriches physical and programmatic connections with the city. Designed to Zero Energy and Green Mark Platinum. Tender stage. Target completion 2019.



Asia School of Business: A Centre of Excellence Kuala Lumpur, Malaysia

Architects: GDP Architects
Client: Bank Negara Malaysia

Description: A business school and executive education centre established by Malaysia's central bank in collaboration with MIT's Sloane School of Management. Target completion 2019.



WEB EARTH ///// SINGAPORE 40 Carpenter Street, Singapore 059919 T (65) 6223 9208
WEB EARTH ///// MALAYSIA Plaza 138, #21-01/02/03/04, 140 Jalan Ampang, 50450 KL, Malaysia T (603) 2161 0907
WEB EARTH ///// ENGLAND 277 Willesden Lane, London NW2 5JA, England T (44) 0207 385 0668
WEB EARTH ///// CHINA 18th Floor Lujiazui Finance Center, 826 Century Avenue Pudong Shanghai 200120, China T (8621) 5116 7108